

# THE SOLUTION OF RE-BAR TYING WORK

# RE-BAR-TIER™ RB515



RE-BAR TYING SYSTEMS

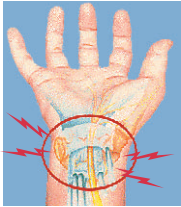
## BENEFITS

### ● REDUCES TYING TIME

About 5 times faster than manual tying. Make ties in less than 1sec. per tie, with consistent tie strength. High speed tying saves you time and money.

### ● REDUCES RISK OF HEALTH PROBLEMS

Just pull the trigger, this simple operation reduces potential wrist damage such as carpal tunnel injuries. Using the optional extension bar reduces the risk of back injuries.



Carpal tunnel syndrome



Extension bar (Option)

Both the National Institute for Occupational Safety and Health and Health Construction Safety Association of Ontario reports state the MAX Re-bar Tying Tool reduces the risk of Carpal Tunnel Syndrome and other work related musculoskeletal disorders.

### ● TIES UP TO #8 × #7

Designed for tying larger rebar. Ties from #5 × #5 up to #8 × #7 combinations.

### ● WRAP ADJUSTMENT DIAL

With the adjustment dial you can select 3 wraps per tie or 4 wraps per tie.

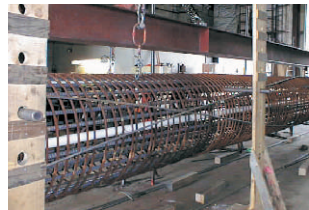
### ● LIGHT WEIGHT & COMPACT BODY

Weighs only 5.2 lbs. Easy to handle.

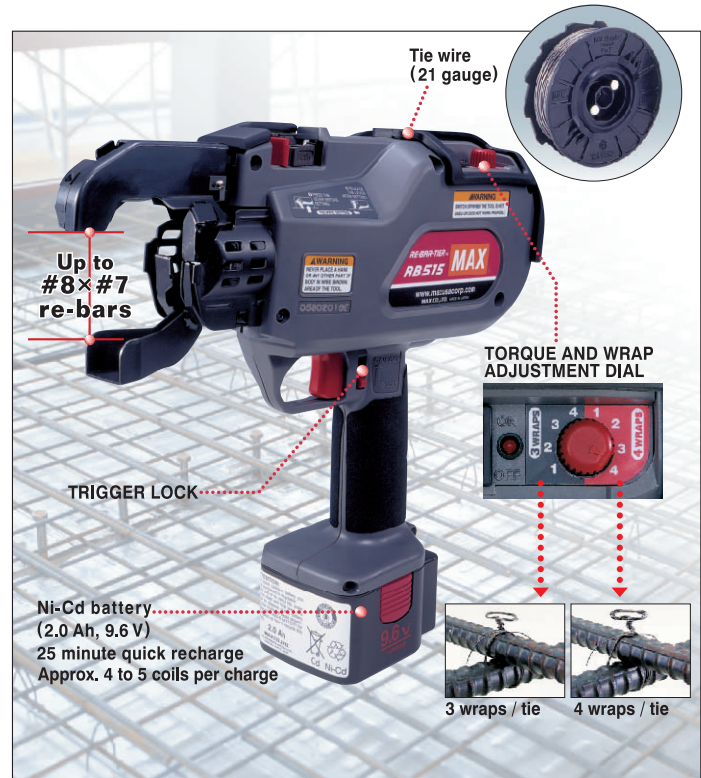
### ● ONE HAND OPERATION

Allows worker to hold re-bar while tying, reducing set up time.

## APPLICATIONS



COMMERCIAL BUILDINGS / FOUNDATIONS / ROAD CONSTRUCTION / BRIDGES  
PRECAST PLANTS / RADIANT HEATING TUBES



## STANDARD EQUIPMENT

- 2 Batteries
- Battery charger
- Case
- Holster
- Instructional DVD (English & Spanish)



Holster (JH300)

## OPTION



Extension bar (JE200)



Tool cover (JT450)

## TIE WIRE 21 gauge. 50 coils / box

TW897: Regular Steel wire

TW897-PC: Polyester-Coated wire



## SPECIFICATIONS

MODEL	RB515
WEIGHT	5.2 lbs.
DIMENSIONS	11-5/8"(H) × 4"(W) × 12"(L)
TYING SPEED	Approx. one second / tie
WRAPS PER TIE	3 or 4 wraps
TIES PER COIL	Approx. 90 ties (3 wraps) Approx. 75 ties (4 wraps)
TIES PER CHARGE	4 to 5 coils
APPLICABLE BAR SIZES	#5 × #5 to #8 × #7
BATTERY	JP409 (Ni-Cd)
VOLTAGE	DC 9.6V (2.0Ah)
RECHARGE TIME	Approx. 25 minutes

The specifications and design of the products in this catalog will be subject to change without advance notice due to our continuous efforts to improve the quality of our products.



## MAX USA CORP.

257 East 2nd Street Mineola, New York 11501  
Phone: 800-223-4293 Fax: 516-741-3272  
www.maxusacorp.com

Dealer: